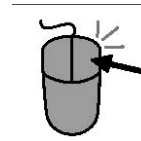


Boardmaker Hints-Windows 5.0

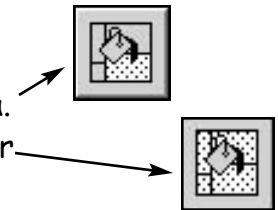
1. Placing symbols on board background or in button:

- Use the cursor and click in the button.
- Select the "Enter" key. This will place symbol in cell with red frame and red frame moves one to the right.
- When looking at thumbnails, right click on the symbol you want. This will keep thumbnail view open while placing symbols.



2. Paint tools will only appear when a specific symbol is selected. While a symbol is selected, you can rotate it, flip it, erase part of it, or paint it. When you change a symbol it is first converted to a bitmap.

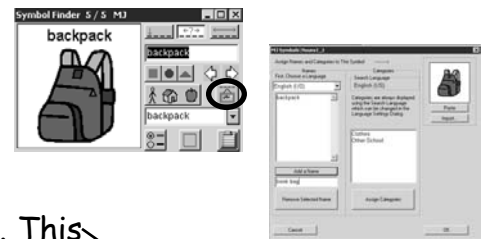
- Top paint can (fill tool): paints to the black line in any given area.
- Bottom paint can (fill all tool): finds every part that is that color and paints it.



Hint: Remember to click on the pain can and then click on the color.

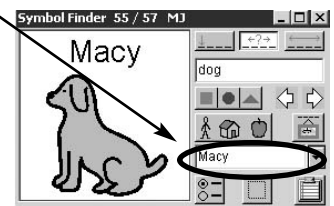
3. To add a name to an existing symbol:

- Select the picture frame.
- Type in the desired name and click "Add Name."



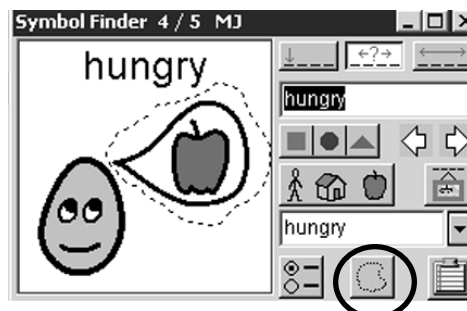
4. To change the text or label above a symbol:

- Use the "alternate name" box on the symbol finder. This is a one-time change.
- Use the "Text Tool" and click directly on the symbol word and retype.

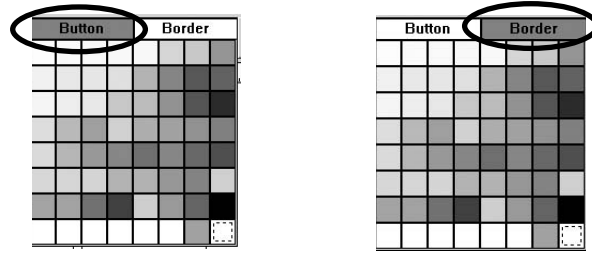


5. To select a portion of a symbol:

- Without selecting any tools, in the symbol finder you will draw a square around the portion of the symbol that you want.
- To avoid getting "surrounding symbolage" click on the dotted square (this is the marquee tool) and you will find the lasso tool. Remember, the lasso tool is a hidden tool! You can now select any portion of the symbol that you want.



6. Remember when using the Color Tool to color a button, you need to select if you are coloring the button or the border.



7. Use the Category Search to look for symbols within a category. It is a great brainstorming tool.

- Select Category Search.
- Select "Clear all Standard Categories."
- Select the category(ies) you want to search.
- Select "OK."
- Don't forget to go back to the Category Search and select "Use all Standard Categories" when you are finished with that search.

